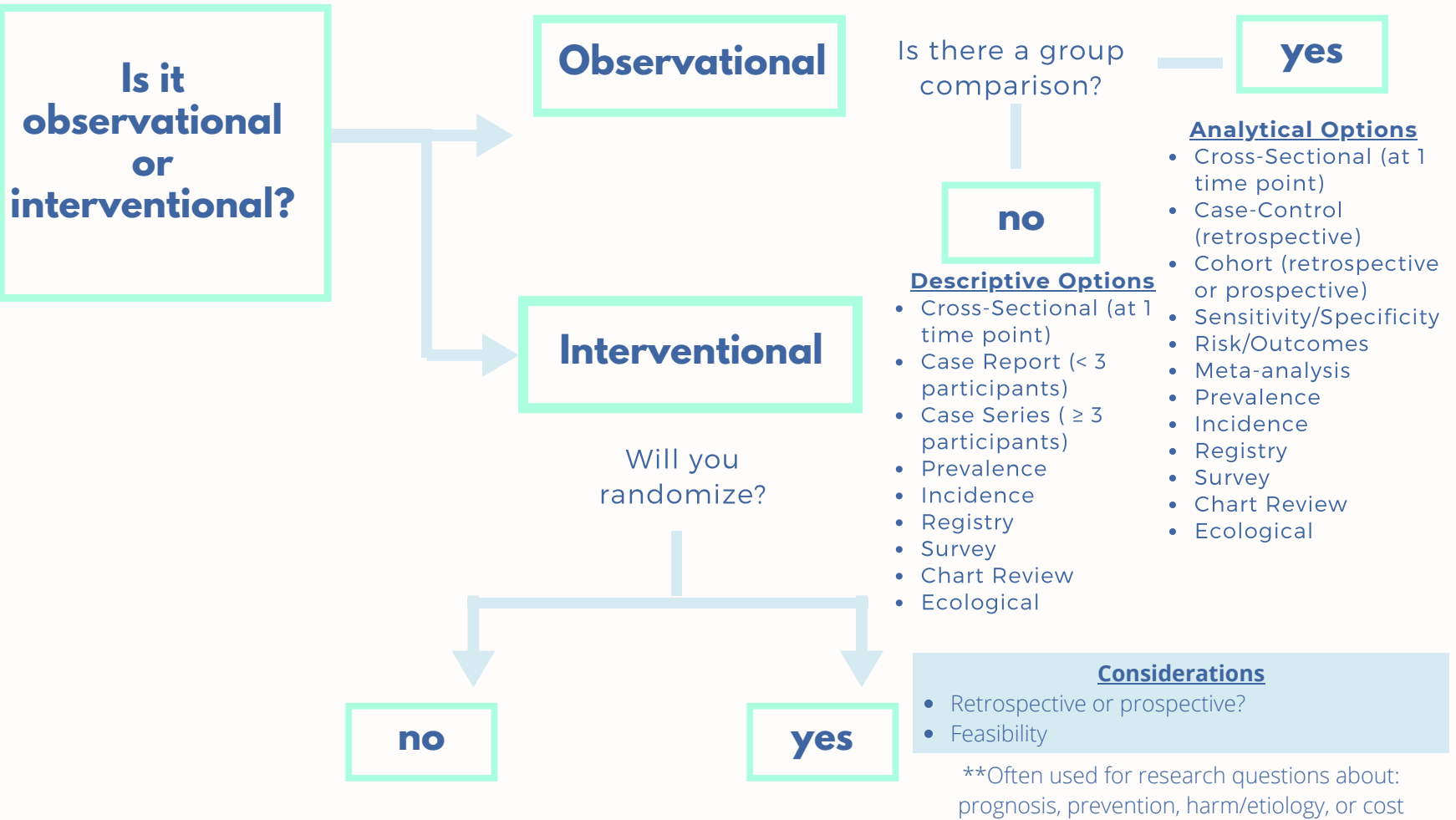


COMMON QUANTITATIVE STUDY DESIGNS



Quasi-Experimental/Comparative non-randomized Options

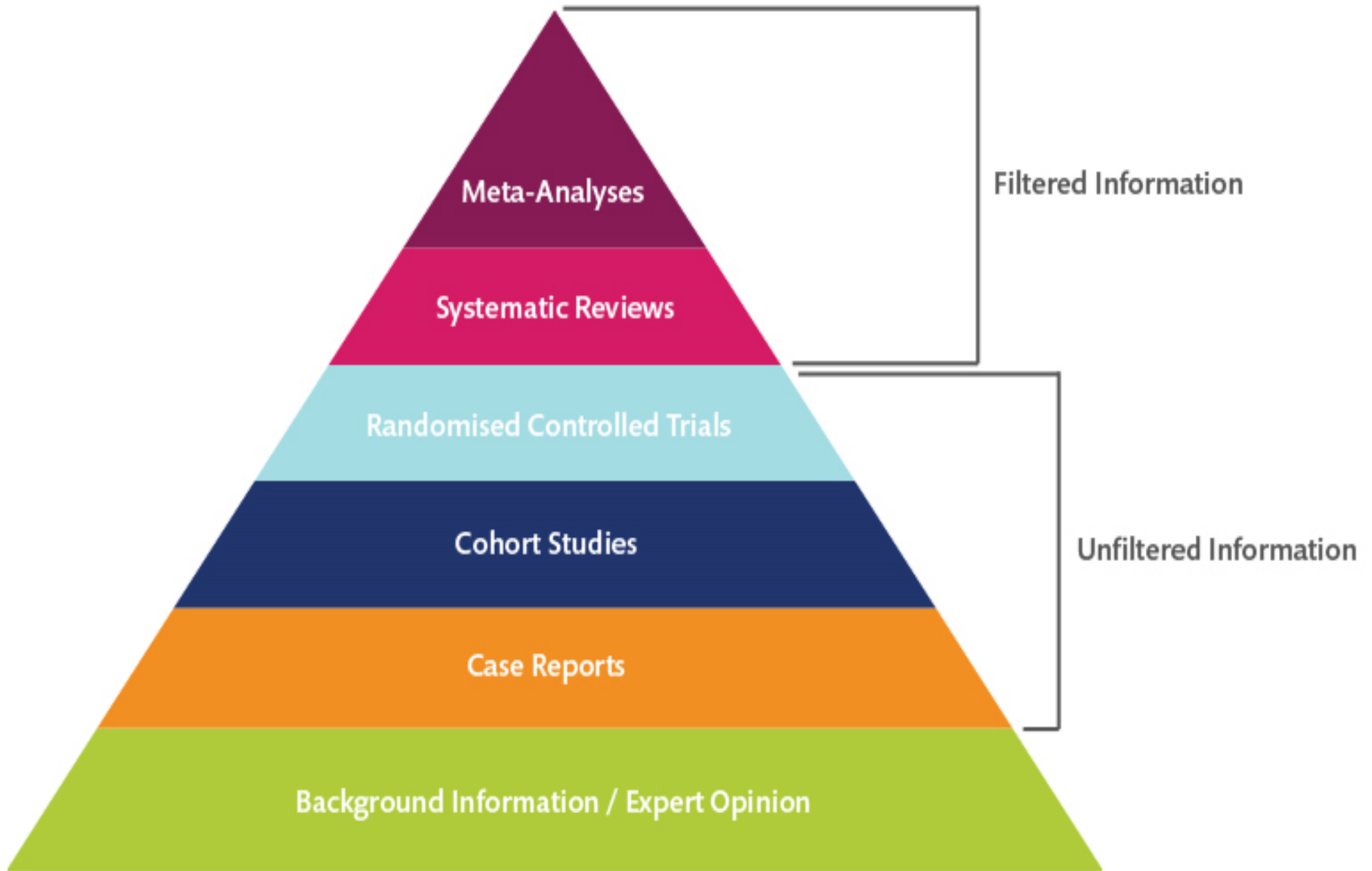
**Ideal if randomization is not ethical or practical

Experimental/Randomized Control Trial Options

**Ideal for research questions about: therapy, prevention, harm/etiology

Considerations

- Blinded or Unblinded?
- Pre-/Post-Test or Post-Test only?
- Time-Series
- Will there be cross-over?
- Control Group



Strength of conclusions →

Experimental	SYSTEMATIC REVIEW & META-ANALYSIS	Collects all previous studies on the topic and statistically combines their results
	RANDOMIZED-CONTROLLED TRIAL	Randomly selects a group of patients to receive a treatment and another to receive placebo
	QUASI- EXPERIMENT	Non-randomly assigns groups of patients to receive either a treatment or placebo
Observational	COHORT STUDY	Follows a group of people to track risk factors and outcomes over time
	CASE-CONTROL STUDY	Compares histories of a group of people with a condition to a group of people without
	CROSS-SECTIONAL SURVEY	Assesses the prevalence of an outcome in a broad population at one point in time
	CASE REPORTS	Detailed histories of a small number of individual cases